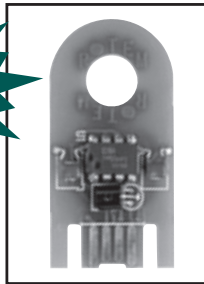




## NMC-64 Controller

### Stand-Alone Controller for Irrigation and Fertilization Control - Medium to Large Applications

Netafim has designed this controller to extend your water and fertilizer management skills to the field when your time is demanded elsewhere. By offering ease of programming, monitoring and accumulating logged data, you will easily recover your investment through reduced input costs: water, energy, chemical and fertilizer. The simplicity of the control system and its capability to record data allows you to repeat or modify your scheduling assuring maximum crop output.



#### Memory Key Program Back-Up

This exclusive feature allows you to back-up all programs of the NMC-64 controller to the key and store it in a safe place. No more reprogramming to restore settings.

#### Product Advantages

- Stand-alone controller specifically designed for Agricultural irrigation and fertigation control.
- Consistent design between NMC-15 and NMC-64 controllers.
- Simple programming with large graphic backlit LCD display - 16 lines x 40 characters.
- Robust design with a rugged all-weather reinforced plastic housing with screw-on lid (IP 67) to withstand tough climates.
- Surge suppression on all inputs and outputs significantly increases reliability.
- Modular design allows easy expansion of input and output boards.
- Application logs for water and fertilizer use are an excellent management tool.
- PC software for controlling, monitoring, graphing and storing historical data from your office computer.
- Superior software flexibility - up to 50 controllers can be connected in a network and presented in the same PC software.
- Multiple options for link to office PC (wire, telephone or radio) to meet site requirements.
- Battery back-up ensures no lost settings or logs due to power failure.
- NMC-64 features required for Agricultural applications include:
  - Filter flushing with master control for pressure sustaining valve
  - Runs up to 40 valves at once (larger transformer may be required)
  - EC and pH monitoring and control
  - Multiple fertilizer mixes and programming options
  - Multiple water and fertilizer flow meters
  - Logs of all data and graphing of sensor data
- Now available in large cabinet with room for all controller connections.

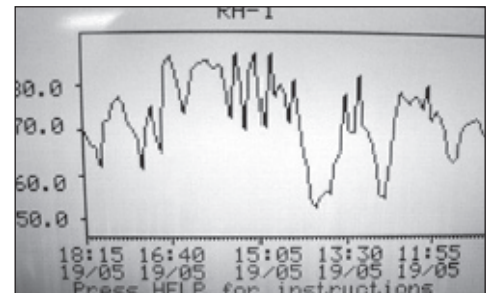


#### Applications

- Medium to large Agricultural applications
- Small to Medium size Greenhouses
- Drip irrigated high value vegetable crops
- Permanent plantings
- All Nurseries



Graphics make programming easy.



Controller graphs sensor data.



**NETAFIM USA**  
5470 E. Home Ave. • Fresno, CA 93727  
888.638.2346 • 559.453.6800  
FAX 800.695.4753  
[www.netafimusa.com](http://www.netafimusa.com)

