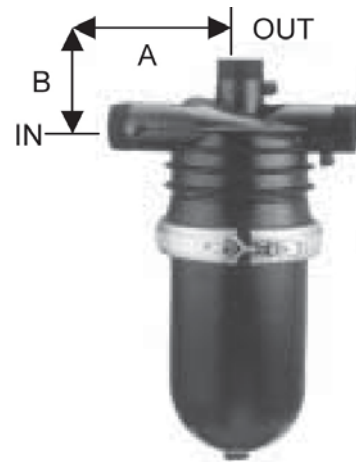


2" Manual Disc Filter

Installation, Operation and Maintenance Instructions

Features

- A right angle reinforced plastic filter with three 2" male connections.
- Filter element consists of grooved discs, mounted on a spine, forming a cylindrical filter element. e filter cover.
- Clamp-on filter cover.
- Resistant to chemicals and liquid fertilizers.
- Pressure testing ports at filter's inlet and outlet.
- Available filtration mesh: 040, 080, 120, 140, 200 and 280.



Technical Data

Flow Range	40 - 120 GPM
Maximum Pressure	140 psi
Filtering Surface Area	148 sq. in.
Filtering Volume	75 cu. in.
Length	19 13/32"
Width	7 5/8"
Weight	13.2 lbs
Distance Between End Connections (A & B)	A = 5 2/3" B = 3 1/3"
Inlet/Outlet Diameter	2" male

Filtration Grades

Disc Color	Mesh	Micron
Blue	040	400
Yellow	080	200
Red	120	130
Black	140	115
Brown	200	70
Green	280	50

Installation

1. Mount filter horizontally for normal filtration.
2. Use Teflon tape on filter threads - Do Not Use Pipe Dope.
3. Ensure correct inlet/outlet direction.
4. When connecting filter to pipe, do not overtighten.

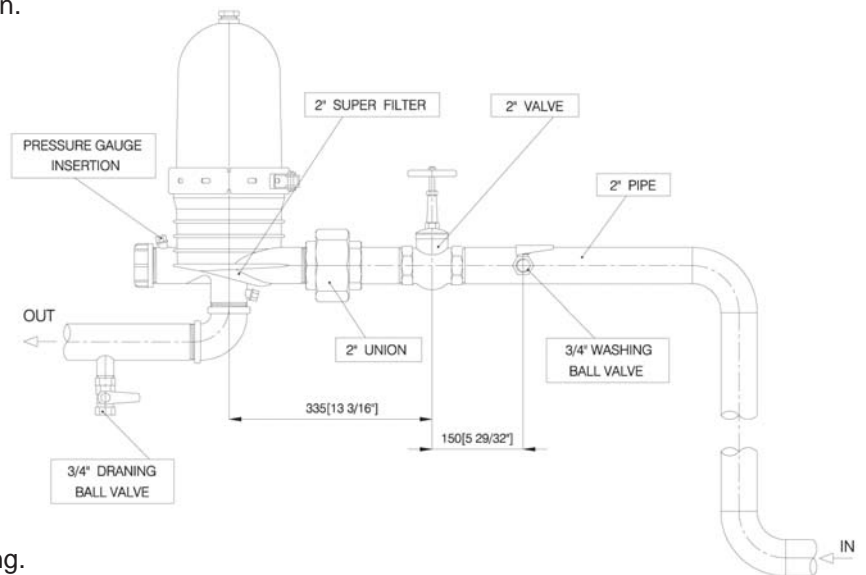
Maintenance and Cleaning

Dismantling

1. Ensure system is turned off and no pressure remains in the pipeline or the filter.
2. Open clamp and remove filter cover from the filter body.
3. Release the tightening nut slightly.
4. Pull out entire filter element.
5. Unscrew the tightening nut, pull out the spine extension and proceed with cleaning.

Cleaning

1. Flush discs with pressurized water.
2. If discs are not clean after flushing with water:
 - a. If the discs have an accumulation of algae in the grooves, soak the discs and spine in a small bucket of Clorox bleach for one hour and then reflush with fresh water.
 - b. If the discs have an accumulation of iron in the grooves, soak the discs and spine in a small bucket of 10% Muriatic Acid for one hour and then reflush with fresh water. Muriatic Acid can be purchased at any pool supply store.



Maintenance and Cleaning

Assembly

1. If previously removed, assemble rings on spine and turn fixing nut clockwise to tighten.
2. Insert filter element in the spine seat correctly.
3. Turn fixing nut clockwise to tighten filter element.
4. Replace filter cover.
5. Close safety catch on the clamp, place clamp on closing edge, and close the safety catch.

Winterization

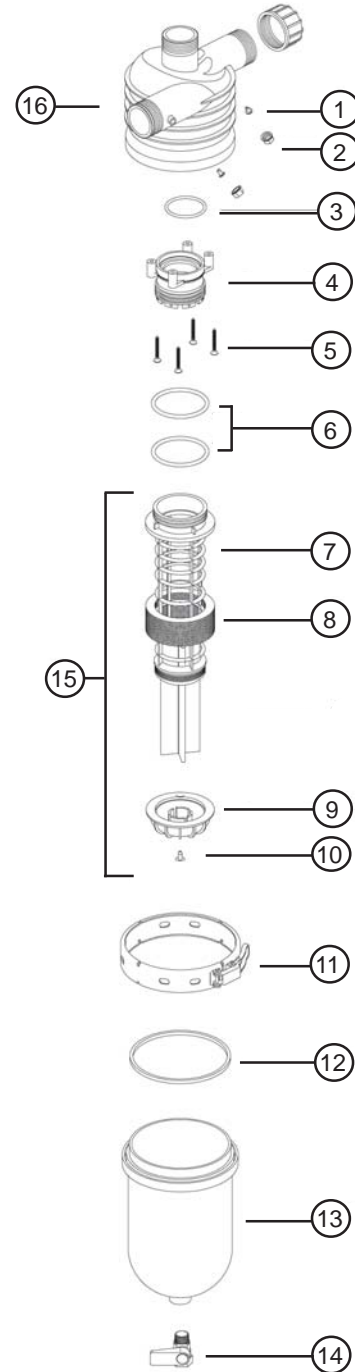
Drain all the water from the filter to avoid cracking due to freezing.

Parts Breakdown

2" Manual Disc Filter

Key	Item Number	Description	Materials
1	70620-005100	Gauge Port Seal	EPDM
2	70620-005200	Gauge Port Nut	R.PP
3	70620-004100	O-Ring 2-146	EPDM
4	70620-004450	Spine Base	R.PP
5	70620-004520	Fastening Bolts	SS
6	70620-004150	O Ring 2-234	EPDM
7	70620-003500	Spine (outer cage only)	PP
8	70620-001400	Ring Set 040 Mesh	PP
	70620-001410	Ring Set 080 Mesh	PP
	70620-001420	Ring Set 120 Mesh	PP
	70620-001430	Ring Set 140 Mesh	PP
	70620-001440	Ring Set 200 Mesh	PP
	-	Ring Set 280 Mesh	PP
9	70620-004500	Fixing Nut	R.PP
10	70620-004517	Fastening Screw	SS
11	70620-004700	Clamp	SS
12	70620-003900	Cover Seal	EPDM
13	70620-002300	Filter Cover	R.PA
14	71610-035700	3/4" Tap	BRASS
15	70620-002650	Filter Element 040 Mesh	PP
	70620-002670	Filter Element 080 Mesh	
	70620-002680	Filter Element 120 Mesh	
	70620-002690	Filter Element 140 Mesh	
	70620-002691	Filter Element 200 Mesh	
	-	Filter Element 280 Mesh	
16	70620-003200	Filter Body	

* Filter Element includes Spine and Ring Set



Materials Key

Code	Material
SS	Stainless Steel
PP	Polypropylene
R.PP	Reinforced Polypropylene
R.PA	Reinforced Polyamide
EPDM	Eth. Propy. Rubber